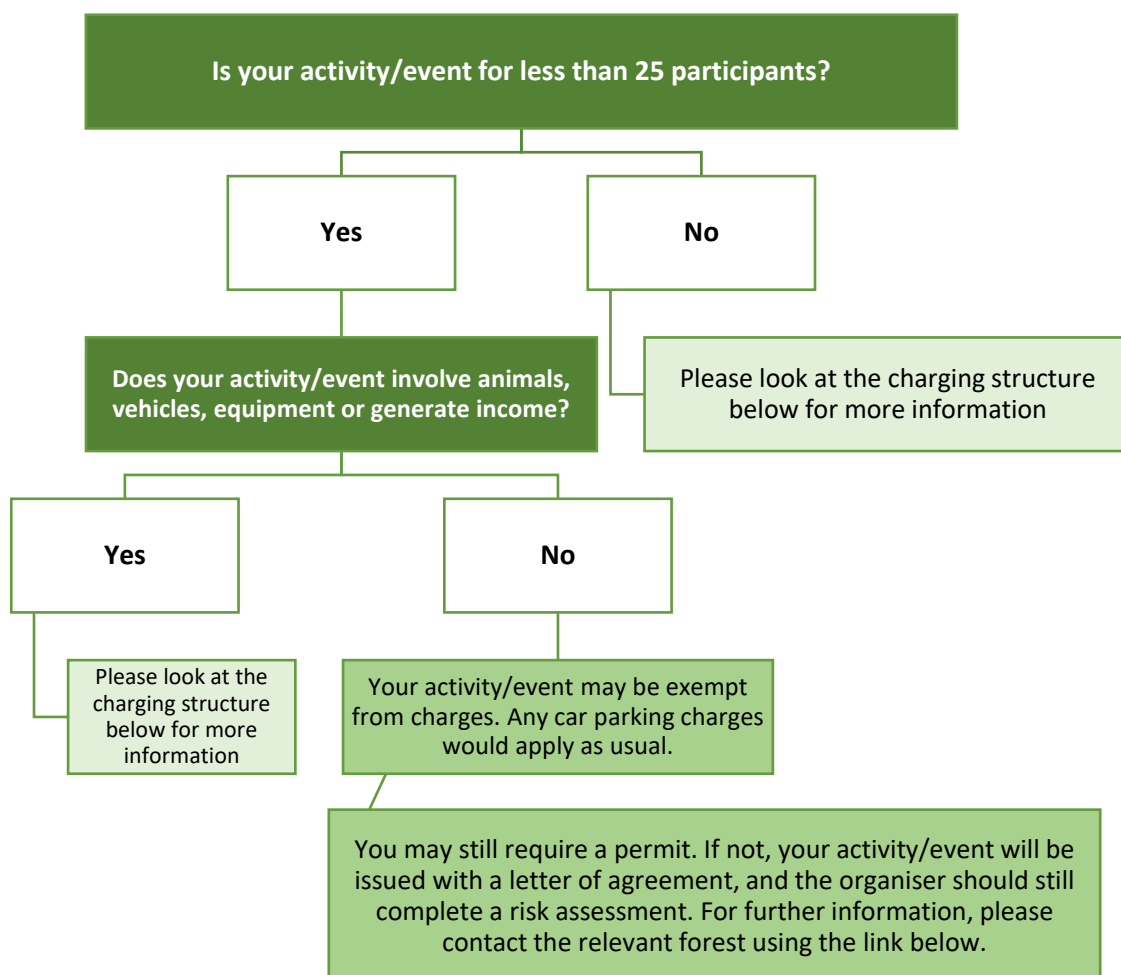


Forestry England permissions pricing document

Where appropriate we will charge for permission applications and for the event itself to try and at least recover our costs. This document has been created to give future permission holders an indicative cost for their activity or event to be held on Forestry England land.

Will we charge for your activity or event?



Indicative pricing information

We may charge you for your activity or event taking place in a Forestry England forest*. This is to enable us to continue our daily work looking after the natural and historic

Permissions pricing

environment of the nation’s forests as well as helping you to conduct your event or activity safely. If you are still unsure about the cost of the permission to hold your activity or event, please [contact the relevant forest](#).

Description	Application Fee	Permission Charge	Staff Charge (Optional)	Site Charge (Optional)	Example Activity
Standard Rate (if participants are charged to take part or income is generated) **	£79 or £81***	20% of your ticket price per participant or total income (excl. VAT)	Scalable on the staff volume required	Scalable on facilities required	Running races, Forest bathing, Ultra-marathon, Yoga, Theatre shows
Standard Rate discounted (if participants are charged to take part or income is generated, but provides significant social benefit or marketing exposure to Forestry England) **	£79 or £81***	15% of your ticket price per participant or total income (excl. VAT)	Scalable on the staff volume required	Scalable on facilities required	Some charity races, some targeted events
Basic Rate (for groups of over 25 participants or involving animals, vehicles or equipment, where no participant is charged)	£79 or £81***	0%	Scalable on the staff volume required	Scalable on facilities required	Husky training, vehicle access, fishing, celebration events
Partnership rate (involving not-for-profit learning, ecological or research activity and/or 3rd party volunteers)	£0	0%	Scalable on the staff volume required	Scalable on facilities required	Local school groups, volunteering groups

Application Fee

We charge a non-refundable application fee for the administrative work it takes to process your permission application. Please also note, in certain circumstances we may need to include VAT on your application fee.

*If your activity or event is not exclusively on Forestry England land we will offer a pro-rata reduction of charges to a minimum of 50%

**The stated pricing is for our ‘Peak’ timings. We offer 5% off the % Permission charge as an incentive discount, when the activity or event will be at off-peak times. These times are site based and may be different depending on location, but for example. 20% of ticket price becomes 15%. For more information on the ‘peak/off peak’ timings for the forest you are interested in, please contact the forest directly using the link above.

***The application fee amount will change for applications where the Permissions Enquiry forms are submitted on or after 6 April 2025. Enquiry forms submitted before 6 April 2025 will still be charged at £79.