



A wintry valley head  
Photo: Pete Nelson



NT Ranger Joel Ireland

### New staff

We have new staff supporting our work in the valley through the various partner organisations. New National Trust Ranger Joel Ireland is in post covering Ennerdale and Wasdale with the North & West Lakes team. Forestry England has a new Forest Works Supervisor: Ben Walker, covering Ennerdale & Thornthwaite. For West Cumbria Rivers Trust, Ruthie Cooper now helps to deliver work on United Utilities land in the west and on the River Ehen. A new Partnership Manager will also be joining the team shortly for United Utilities. This is great news and whilst all these staff have wider geographical remits beyond Ennerdale, they bring a much welcomed extra resource and support for the Wild Ennerdale partnership staff and volunteers.

**A very big 'thank you' to all our fantastic volunteers who commit their time, energy, skills and enthusiasm to deliver a range of practical works every Tuesday in the valley. Your efforts throughout 2024 have been brilliant and much appreciated!**

Recent tasks carried out by West Cumbria Rivers Trust and volunteers on United Utilities land (west) have included leaky dam maintenance to help reduce sediment and nutrient input into the River Ehen, woodland management which will improve the diversity of existing woodland areas, invasive non-native species control and surveying. Survey work includes fish, wildflower, trees and Marsh fritillary web-counting, which then feed into monitoring programmes. Looking forward, plenty of tree planting is scheduled this winter season, enhancing biodiversity and increasing water storage. Further tree management is planned, as are habitat improvement works and projects to reduce sediment and nutrient run off including willow stakes, laying live woody debris, sediment traps & fencing.



Volunteers carrying out 'leaky dam' maintenance work on UU land  
Photo: West Cumbria Rivers Trust

## Coast-to-Coast Update

We have been supporting the LDNPA works to upgrade the new Coast-to-Coast route ahead of it becoming a National Trail next Autumn. This has involved replacing three old 'stepped' bridges with new (non-stepped) bridges, new path surfacing and some smoothing & widening in places on existing paths, along with the provision of two new benches. The aim of the works is to improve access for people and create a suitable alternative option for walkers following the Coast-to-Coast route along the northern lakeshore.

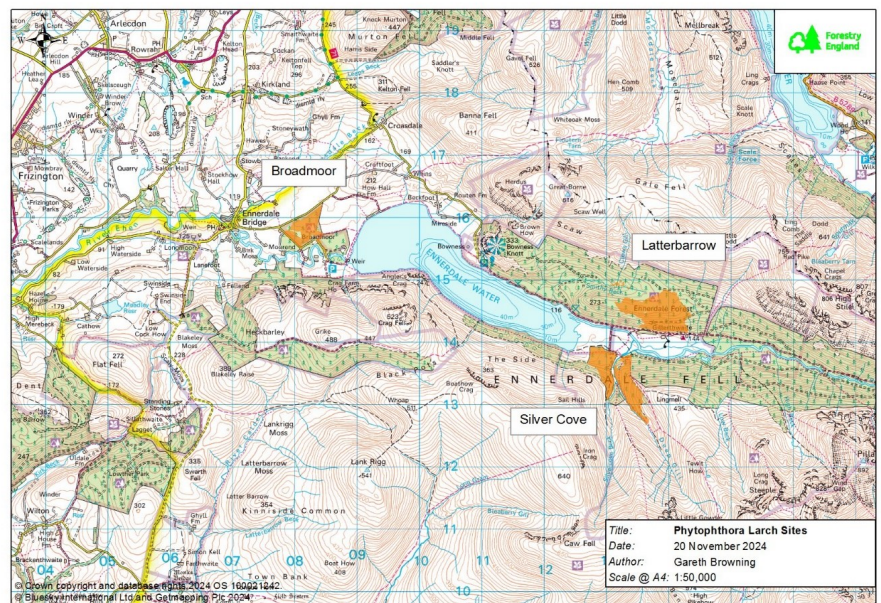
The delivery team at LDNPA have provided regular updates via community newsletters, on-site signage and a drop-in session at The Gather.

New bench along northern lakeshore.  
Photo: LDNPA



## Phytophthora Larch Disease Update

Forestry England are continuing to develop a response to the latest wave of Phytophthora larch disease in Ennerdale and the plant health notices that have been issued to them. Plans for three sites are being developed including Broadmoor, Silver Cove and Latterbarrow (see orange shaded areas on map). The current expectation is that work may start in Silver Cove in February 2025 with the other two sites following later. Harvesting work is likely to continue into summer 2025. As with previous timber harvesting there will be restrictions on timber haulage to avoid school runs and there will be no haulage at weekends or on bank holidays. Timber haulage will also be limited to 25mph to and from the A5086 and the forest, with a further 10mph speed limit through Croasdale. Some rights of way through Broadmoor and Silver cove will need closing and diverting for periods. Visitor information will be provided on the Wild Ennerdale and Forestry England websites, around live harvesting sites and at main entrances to the valley.



Galloway cattle in Gillerthwaite Fields

**Wild Ennerdale** is a partnership of people and organisations led by the Forestry England, National Trust, United Utilities and Natural England. The Wild Ennerdale Partners are allowing the landscape to evolve naturally with reducing human intervention and invite you to explore this unique valley and experience its special sense of wildness. [wildennerdale.co.uk](http://wildennerdale.co.uk)

